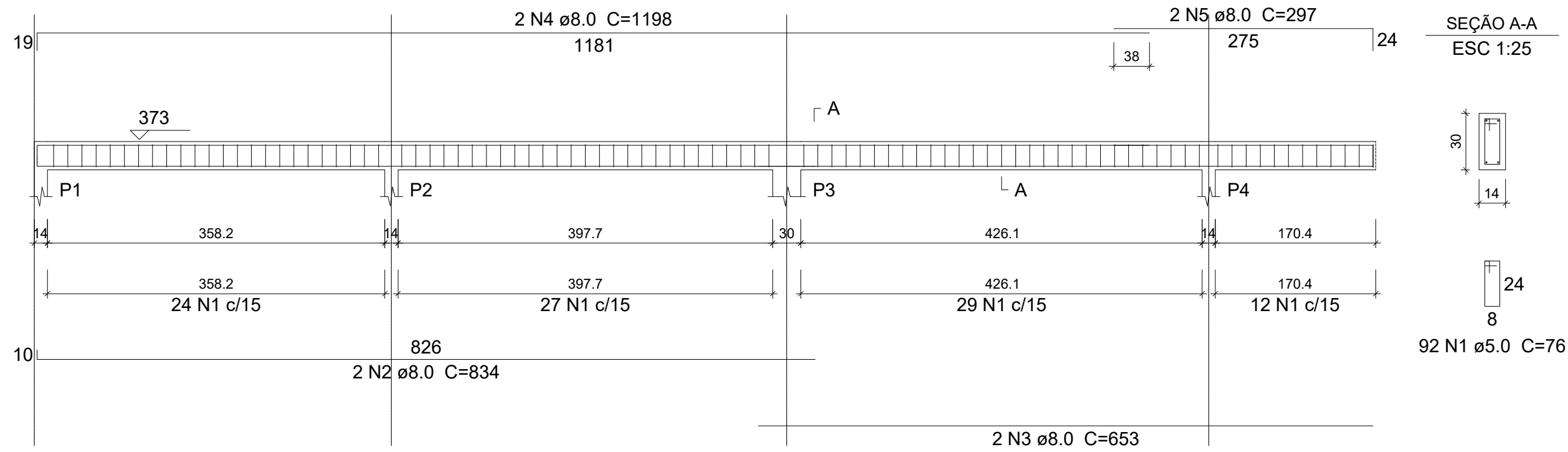
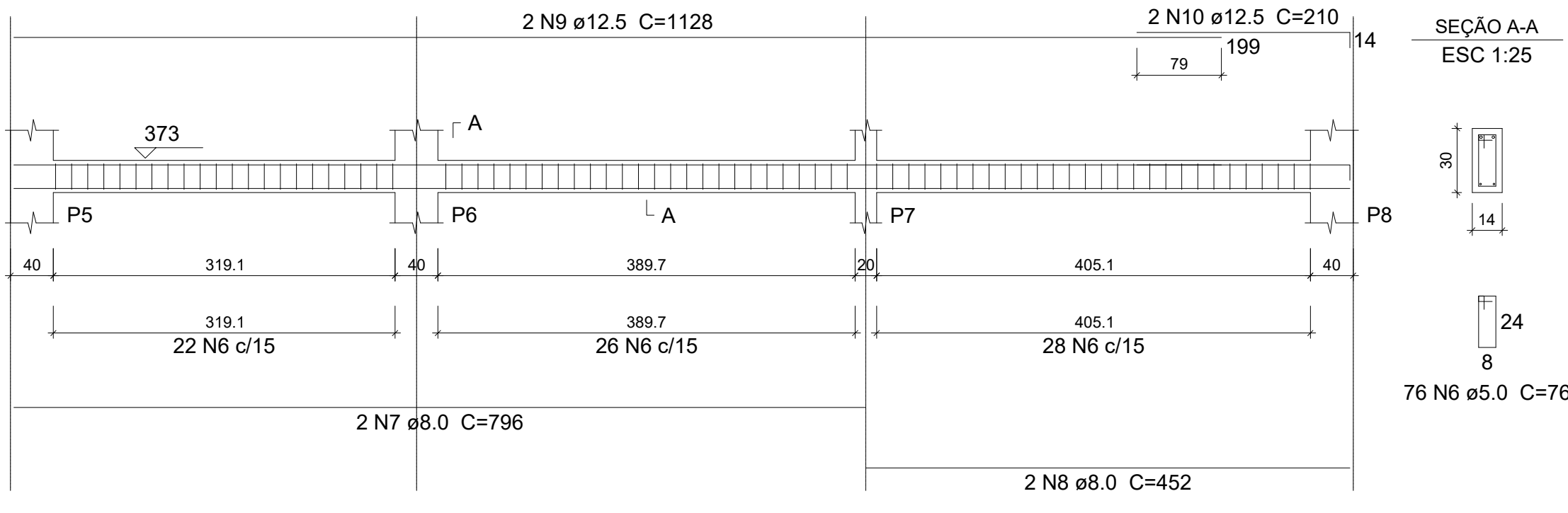


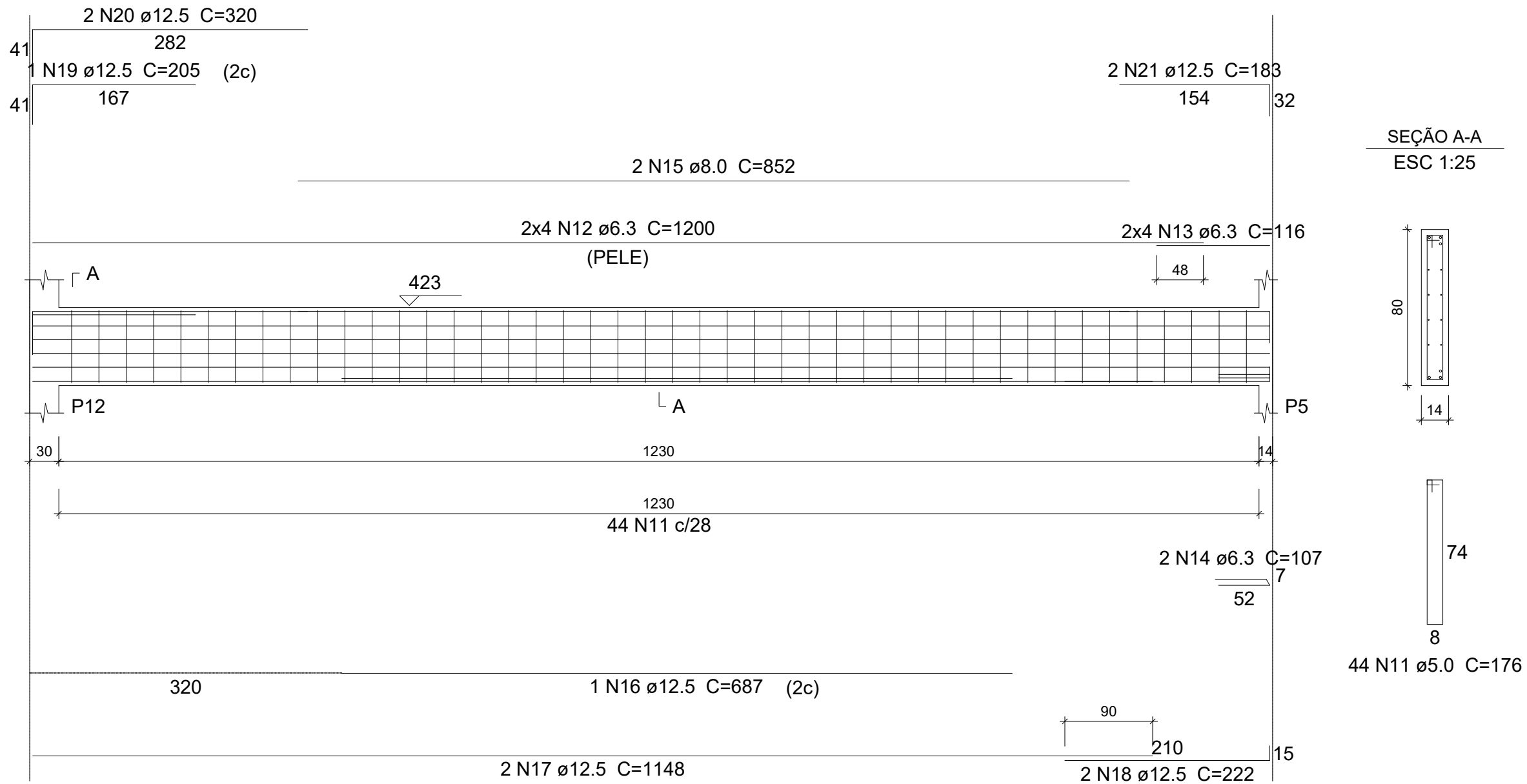
V101 (14 x 30)
ESC 1:50



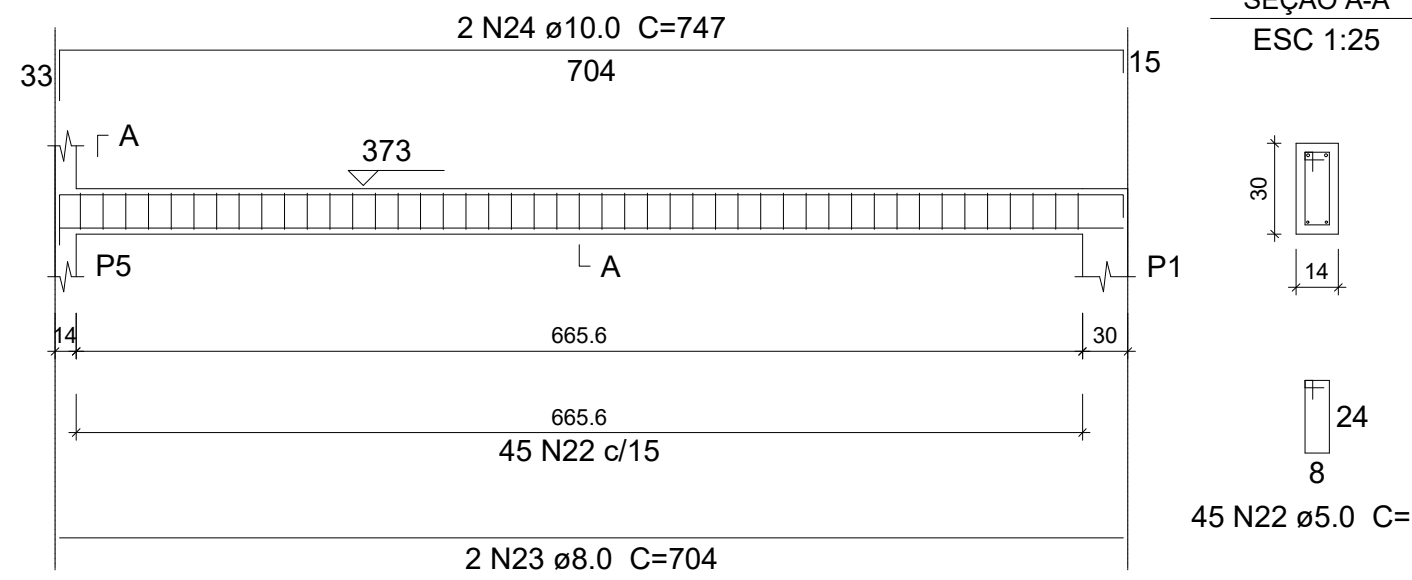
V102 (14 x 30)
ESC 1:50



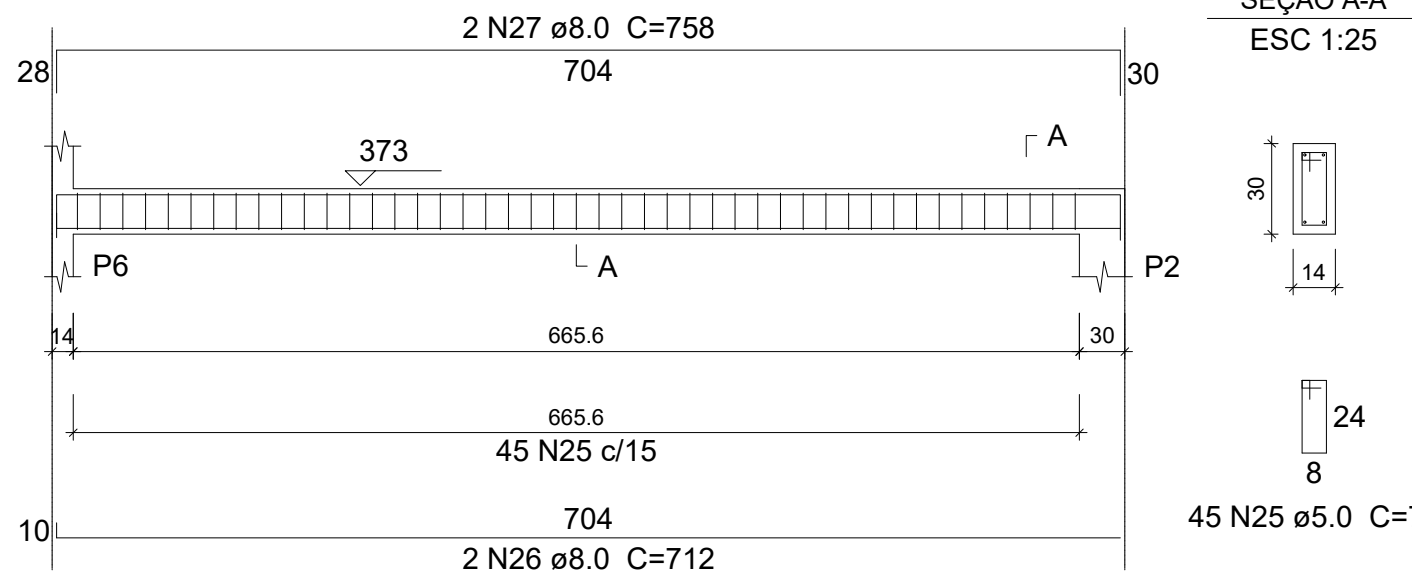
V103 (14 x 80)
ESC 1:50



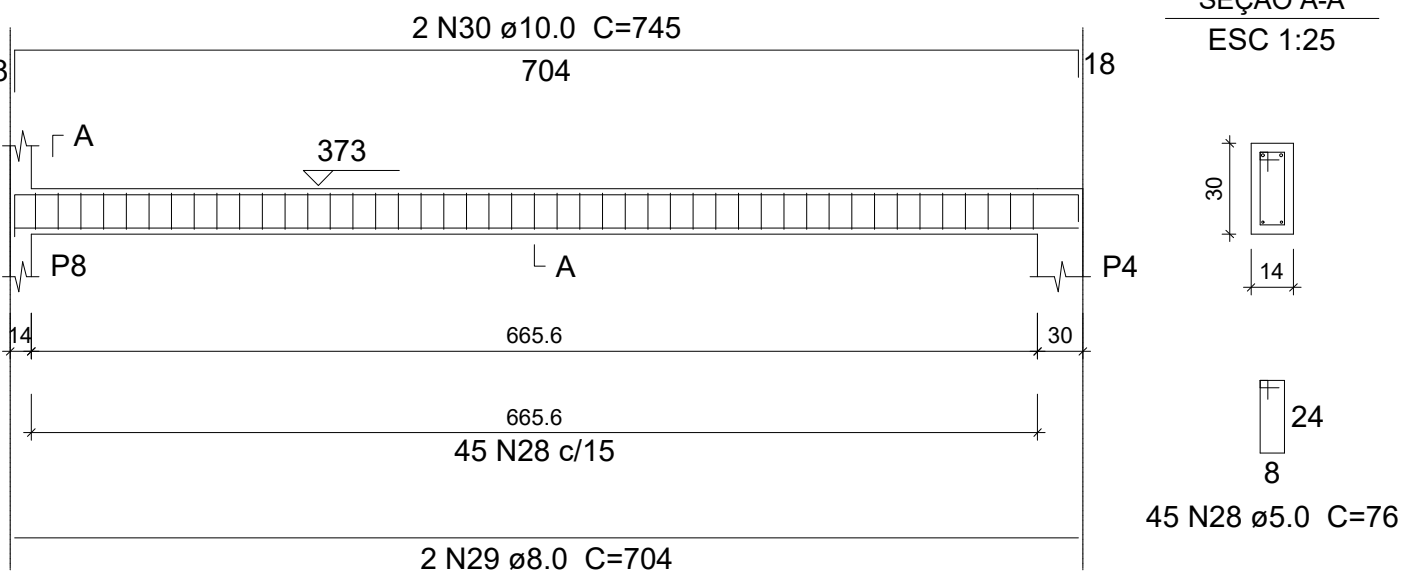
V104 (14 x 30)
ESC 1:50



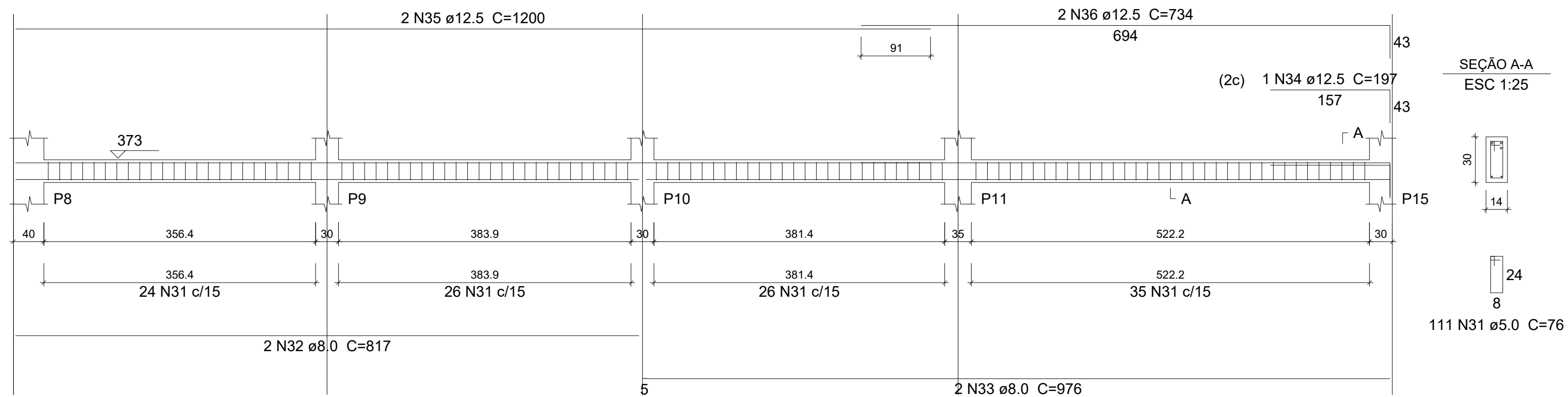
V105 (14 x 30)
ESC 1:50



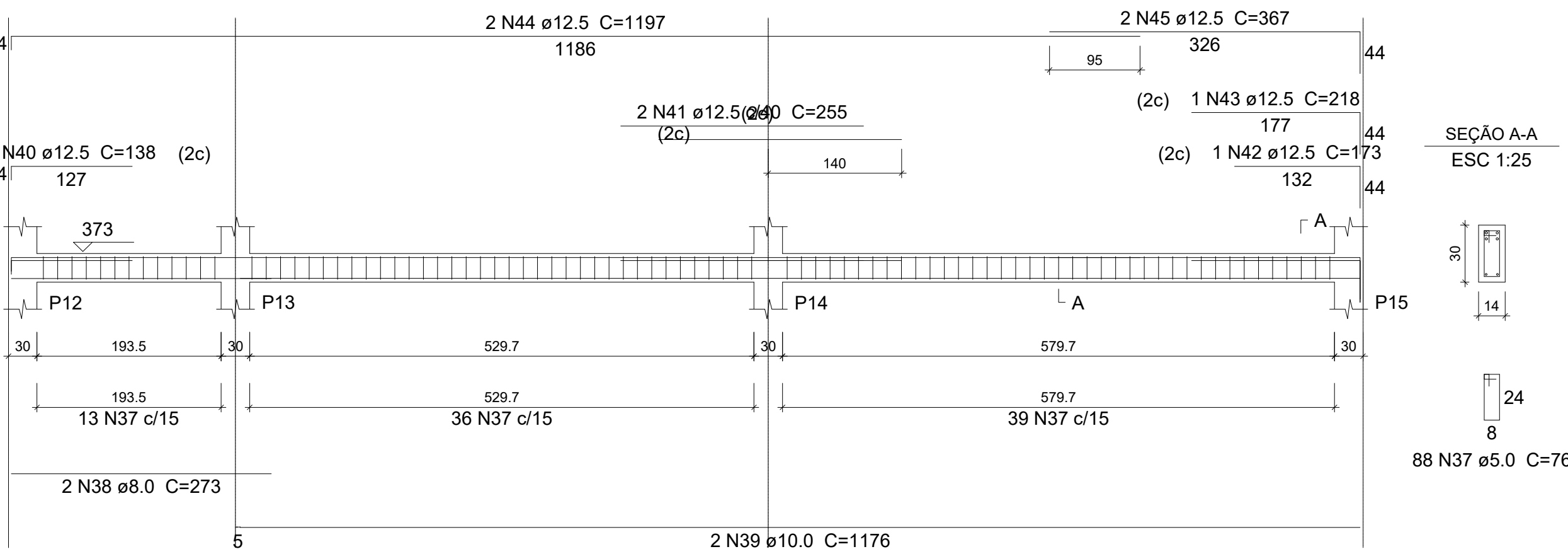
V106 (14 x 30)
ESC 1:50



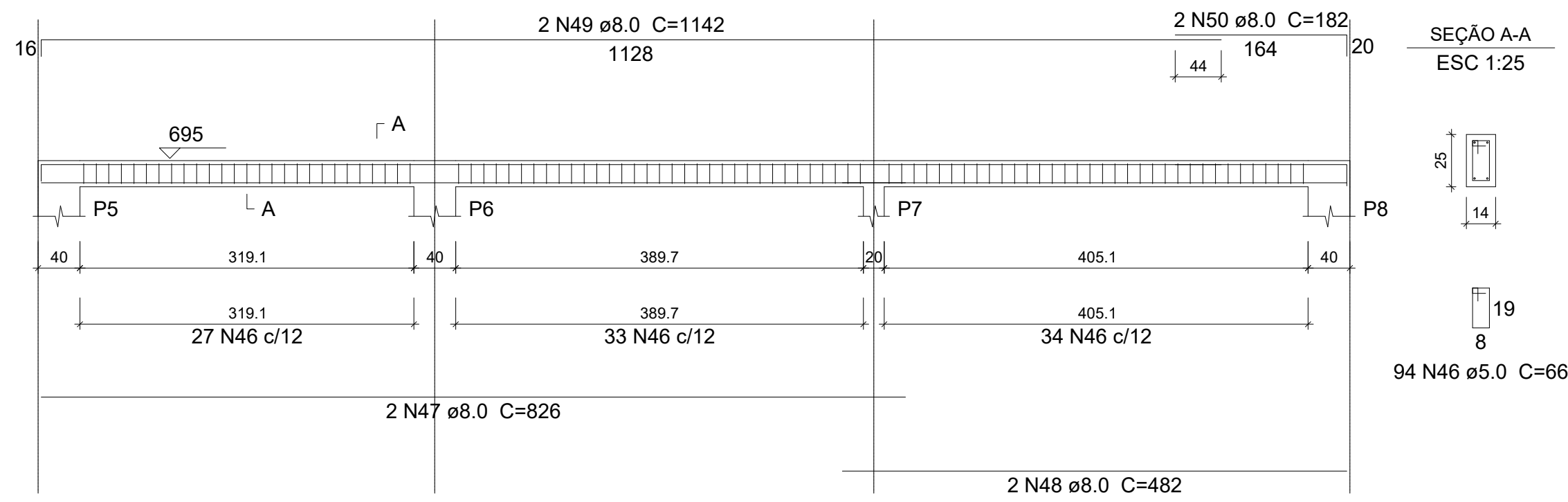
V107 (14 x 30)
ESC 1:50



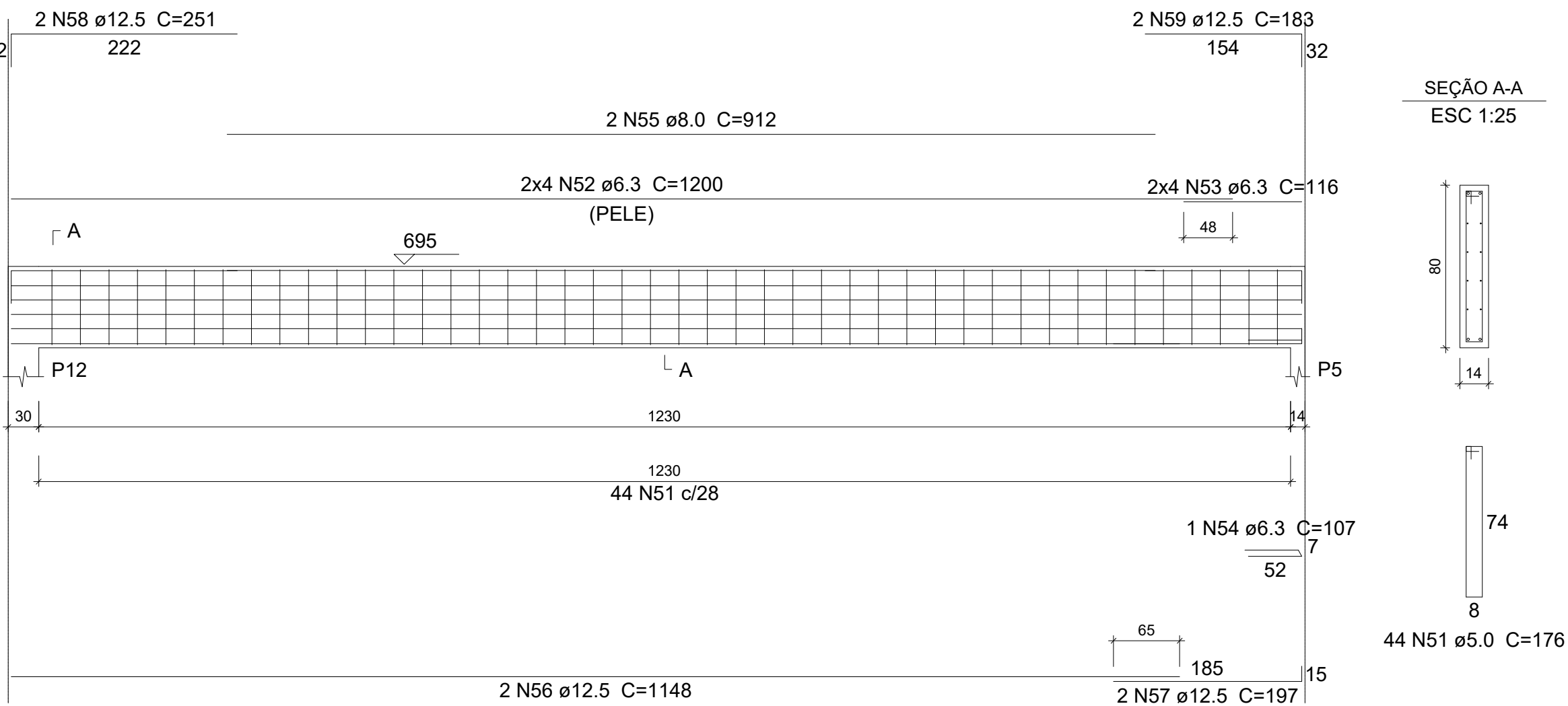
V108 (14 x 30)
ESC 1:50



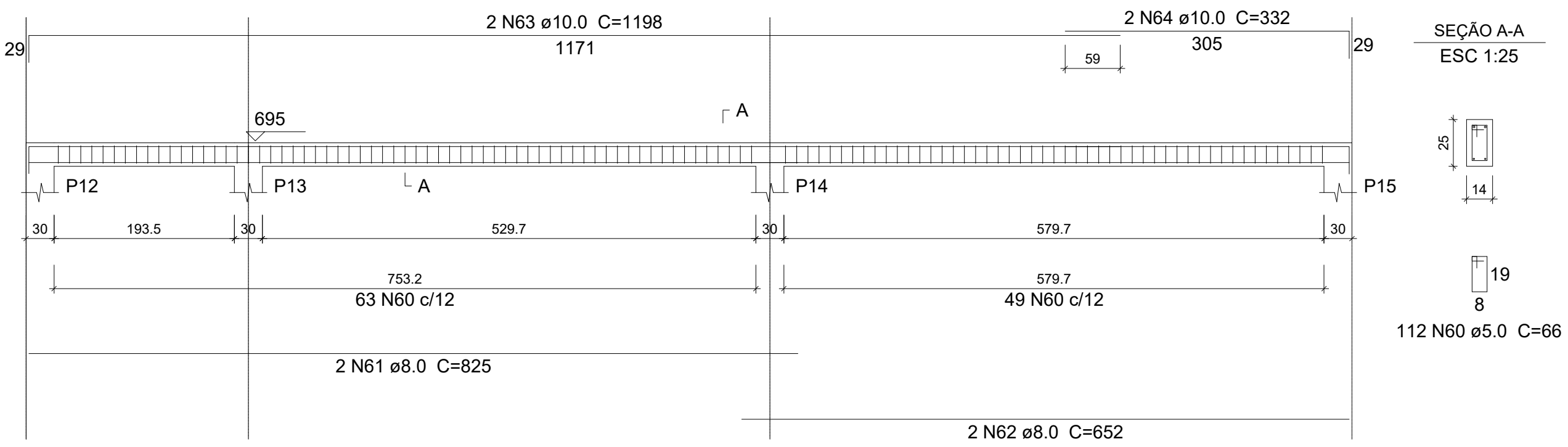
V201 (14 x 25)
ESC 1:50



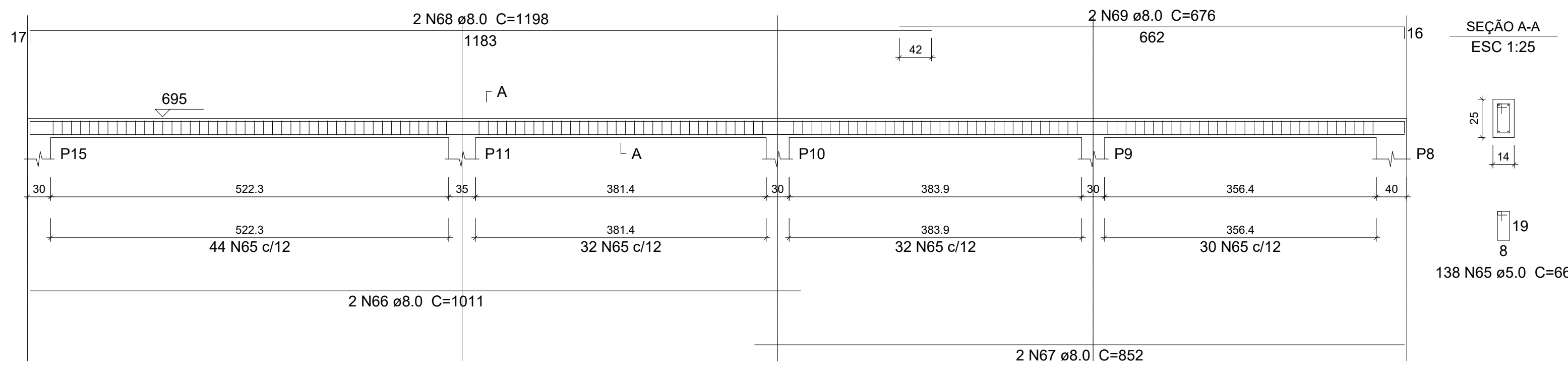
V202 (14 x 80)
ESC 1:50



V203 (14 x 25)
ESC 1:50



V204 (14 x 25)
ESC 1:50



Relação do aço

ELEMENTO	AÇO	N	DIAM	Q	UNIT (cm)	C.TOTAL (cm)
1º Pavimento	CA60	1	5.0	92	76	6992
	CA50	2	8.0	2	834	1668
	CA50	3	8.0	2	653	1306
	CA50	4	8.0	2	1198	2396
	CA50	5	8.0	2	297	594
V102	CA60	6	5.0	76	76	5776
	CA50	7	8.0	2	796	1592
	CA50	8	8.0	2	452	904
	CA50	9	12.5	2	1128	2256
	CA50	10	12.5	2	210	420
V103	CA60	11	5.0	44	176	7744
	CA50	12	6.3	8	1200	9600
	CA50	13	6.3	8	116	928
	CA50	14	6.3	2	107	214
	CA50	15	8.0	2	852	1704
V104	CA50	16	12.5	1	687	687
	CA50	17	12.5	2	1148	2296
	CA50	18	12.5	2	222	444
	CA50	19	12.5	1	205	205
	CA50	20	12.5	2	320	640
V105	CA50	21	12.5	2	183	366
	CA60	22	5.0	45	76	3420
	CA50	23	8.0	2	704	1408
	CA50	24	10.0	2	747	1494
	CA60	25	5.0	45	76	3420
V106	CA50	26	8.0	2	712	1424
	CA50	27	8.0	2	758	1516
	CA50	28	5.0	45	76	3420
	CA50	29	8.0	2	704	1408
	CA50	30	10.0	2	745	1490
V107	CA60	31	5.0	111	76	8436
	CA50	32	8.0	2	817	1634
	CA50	33	8.0	2	976	1952
	CA50	34	12.5	1	197	197
	CA50	35	12.5	2	1200	2400
V108	CA50	36	12.5	2	734	1468
	CA60	37	5.0	88	76	6688
	CA50	38	8.0	2	273	546
	CA50	39	10.0	2	1176	2352
	CA50	40	12.5	1	138	138
V109	CA50	41	12.5	2	255	510
	CA50	42	12.5	1	173	173
	CA50	43	12.5	1	218	218
	CA50	44	12.5	2	1197	2394
	CA50	45	12.5	2	367	734
Cobertura	CA60	46	5.0	94	66	6204
	CA50	47	8.0	2	826	1652
	CA50	48	8.0	2	482	964
	CA50	49	8.0	2	1142	2284
	CA50	50	8.0	2	182	364
V202	CA60	51	5.0	44	176	7744
	CA50	52	6.3	8	1200	9600
	CA50	53	6.3	8	116	928
	CA50	54	6.3	1	107	107
	CA50	55	8.0	2	912	1824
V203	CA50	56	12.5	2	1148	2296
	CA50	57	12.5	2	197	394
	CA50	58	12.5	2	251	502
	CA50	59	12.5	2	183	366
	CA60	60	5.0	112	66	7392
V204	CA50	61	8.0	2	825	1650
	CA50	62	8.0	2	652	1304
	CA50	63	10.0	2	1198	2396
	CA50	64	10.0	2	332	664
	CA60	65	5.0	138	66	9108
V205	CA50	66	8.0	2	1011	2022
	CA50	67	8.0	2	852	1704
	CA50	68	8.0	2	1198	2396
	CA50	69	8.0	2	676	1352

Resumo do aço

AÇO	DIAM	C.TOTAL (m)	PESO (kg)
CA50	6.3	213.8	52.4
CA50	8.0	375.7	148.4
CA50	10.0	84	51.8
CA50	12.5	191.1	184
CA60	5.0	763.5	117.6

PESO TOTAL

Vol. de concreto total (C-25) = 7.8 m³
Área de forma total = 132.53 m²



PROJETO ESTRUTURAL

PROJETO
NÚMERO: 001/2023

OBRA: INSTITUCIONAL - SESC LER

RT. PROJETO:	PROPRIETÁRIO:
DOMINGOS J. DA COSTA ENG. CIVIL CREA-TO nº 211808/D	SESC LER - Unidade Porto Nacional - TO CNPJ: 004.507.611-18

RT. EXECUÇÃO:	DECLARO QUE A APROVAÇÃO DESSE PROJETO NÃO IMPLICA NO RECONHECIMENTO POR PARTE DA PREFEITURA DO DIREITO DE PROPRIEDADE DO TERRENO

DESENHO: ENG. MURILLO RODRIGUES CÂNDIDO DE OLIVEIRA
CONTEÚDO: DETALHE DAS VIGAS AÉREAS

ENDEREÇO: RUA NOVE, S/N, SETOR: NOVO PLANALTO
CIDADE: PORTO NACIONAL ESTADO: TO DATA: OUT./2023

ESCALA: INDICADA	REVISÃO:	ÁREAS: VER ARQ.	PRANCHA: 8/8